



To: All Vendors

From: Adam Haab, Supply Chain Services Manager, Accreditation and Regulatory Readiness

Date: Nov 2025

Subject: Pavilion Opening

U-M Health is excited to announce the opening of the *D. Dan and Betty Kahn Health Care Pavilion!* The Pavilion is scheduled to open on 11/16 for the first full day of patient care.

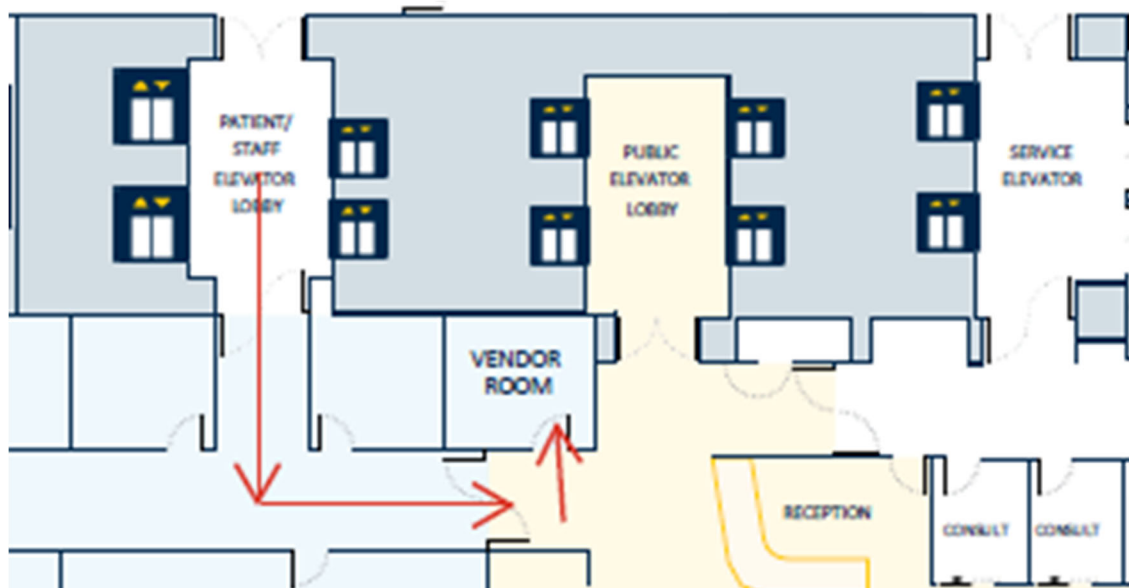
Below are some key things for you to know.

- **12 floors**
- **264 private inpatient rooms**
 - 24 bed Neuro ICU
 - 10 x 24 bed Universal Units
- **Operating rooms** on the 4th and 6th floors – first case on **12/8**
 - Central Sterile Supply in between on the 5th floor – opening **11/24**
- **Public entrance on the 3rd floor**
- **Connection to CVC** on Level 1 (**MCard access**) and 3 (**public & visitor access**)

Address: 1315 E. Ann Street, Ann Arbor, MI 48109

Vendormate: A new terminal will be installed at the main entrance on the 3rd floor.

RepScrubs: There is a Vendor Room on the 4th floor (4-137) with lockers and a ScrubPort. This is the only ScrubPort in the building that will support the ORs, CSPD, and procedural areas. Access will be via the staff elevators with the room near the reception area.



CSPD

CSPD will be on the 5th floor and accessible from the staff elevators.

Dock Access & Deliveries

- The Pavilion has a dock that including four elevated bays and one ramp.
- Access to the dock will be via Simpson Dr. to facilitate one way traffic (in east, out west).
- A guard shack is being constructed on the east side of the Cardiovascular Center which will control vehicle flow into the Pavilion.
- There are four passenger vehicle parking spaces, two near the dock and two on the north side of the building for deliveries or pickups. These parking spaces are limited to 20 minutes only and you must have an MCard.

Dock Traffic Flow



Parking

Vendor parking will be limited to Taubman (P2/P3), and Mott (P4). Vendors are discouraged from parking in the Cancer Center (P1) or Cardiovascular Center (P5) parking structures unless directed there by a parking attendant. When the new structure is completed on the corner of Ann and Zina Pitcher, options for Vendors will be reevaluated.

MCards

Supporting the Pavilion OR will require a red MCard. Please follow the steps below.

1. Complete a form at the UH OR - Surgery Reception – between the hours of 6a-4p. Steve Martin is the primary contact.

2. MCard fees are paid at the Hospital Cashier's Office on the 2nd floor of University Hospital. A receipt of payment will be provided which will need to be shown at the Key & ID Office.

- a. Credit Card
- b. Debit Card

3. MCard Issuing Station – Key & ID Office Med Inn Building

Med Inn Building
Room C158
1500 E Medical Center Drive
Ann Arbor, MI 48109

MCard inquiries, please call 734 763-6376 or email KeyidOffice@med.umich.edu

Business Hours:

- Monday – Friday: 7:00 a.m. – 3:55 p.m.
- Saturday: Closed
- Sunday: Closed

Walk-ins accepted, no appointment needed